

Tie-Dye Washing Instructions

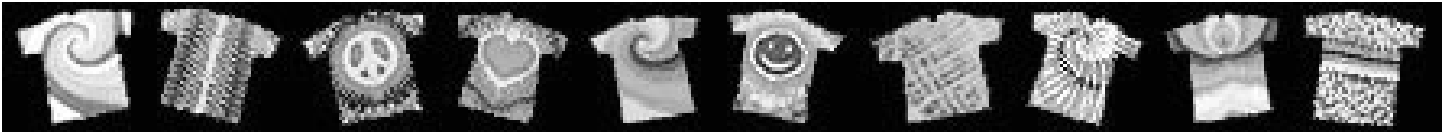
Note to parents:

Half of the fun of making these is in the opening up of the shirt and seeing what has been created. I always ask that you allow your child to do as much of this as possible, think of yourself as a guide to getting it right!

There are a few things that you do need to know before you and your child wash the shirt, so...

please read this before you start & call or e-mail with any questions.

657-2158 - dkolber@Glenview34.org - www.mrkolber.org



1. Please wait two days (around 48 hours from when you dyed the shirt) to wash. It takes 24 to 48 hours for the dye to fully set into the shirt. Leave the shirt in the bag that it was brought home in until you are ready to wash the shirt. Be sure to leave it in a sink, or a pan where it will not leak. The dye will actually work better if you let it soak longer, giving you better colors with sharper edges.

2. Before handling the shirt, **PLEASE WEAR GLOVES OR BAGS ON YOUR HANDS!** The dye that we are using is non-toxic, but it will stain your skin and clothing. If you do not wear gloves, you will end up with “purple” fingers for a few days, as well as ruined clothing, so it is best to take precautions!

3. While the shirt is still tied, it needs to be rinsed under cold running water, the sink that is closest to the washing machine is usually the best to use, less water dripping all over after rinsing. This should take you about five minutes. When you see very little dye running off of the tied up shirt, start to gradually remove the rubber bands while still rinsing. Get as much dye out as possible this way. Immediately after rinsing, wring out the excess water from the shirt, then wash the shirt by itself with cold water and soap in the washing machine. Remember, good rinsing keeps the design from looking “muddy” and colors from running into each other.

4. After the washer has finished, put your shirt into the dryer. The dye sets to a permanent color with the heat of the dryer. If you let the shirt sit in the washing machine for a long time, or do not dry the shirt, the colors will run together into a blurry design.

5. Bring your shirt to your first class of next week!

